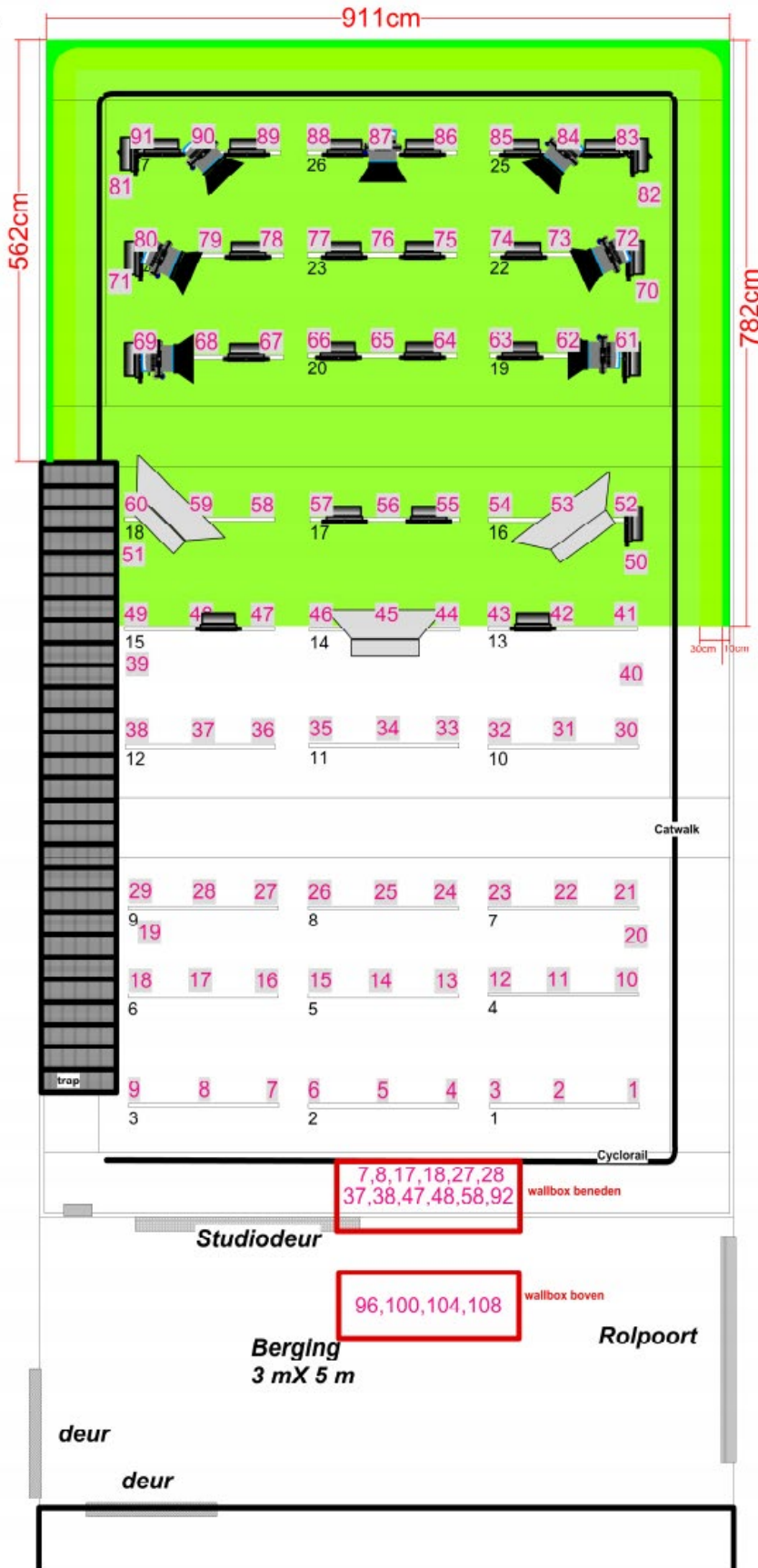


STUDIO 3 GREENKEY



OVERVIEW



STUDIO 3



STUDIO FLOOR

surface area:	15.7 m x 9.25 m (145 m ²) x 7.5 m (h)
usable surface area:	14.5 m x 9.05 m (117 m ²) x 5.5 m (h)
floor load capacity:	1,000 kg/m ² the floor is made of special synthetic rubber PMP Coating (so the floor can be painted)

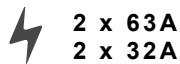
CYCLORAMAS AND SCREENS

one circuit covers the entire studio the following screens are provided:

black velvet stage screens, min. reflection, max. absorption: 5.5 m x 23 m

Big greenkey studio

POWER



2 x 63A
2 x 32A

LIGHTING

72 lighting booms
maximum useful load per light boom: 120 kg
average vertical shift: 120 mm/sec
Lighting boom control panel

The manual operating panel for the lighting booms is located on the central passageway. It includes the required control electronics and selection switches for the 27 lighting booms.

Lighting control system:

- Chamsys QuikQ20
- 7 x arri L7c
- 25 x visio 220w PL 954 (5400K)